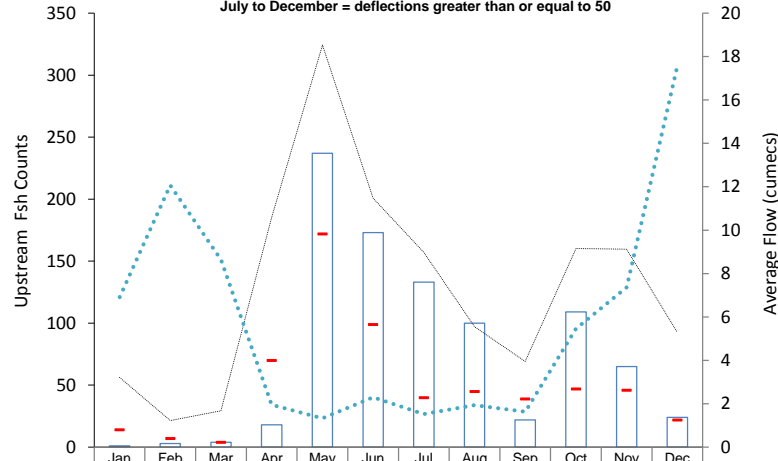


### Upstream counts of 'large' fish recorded at Restormel fish counter 2020

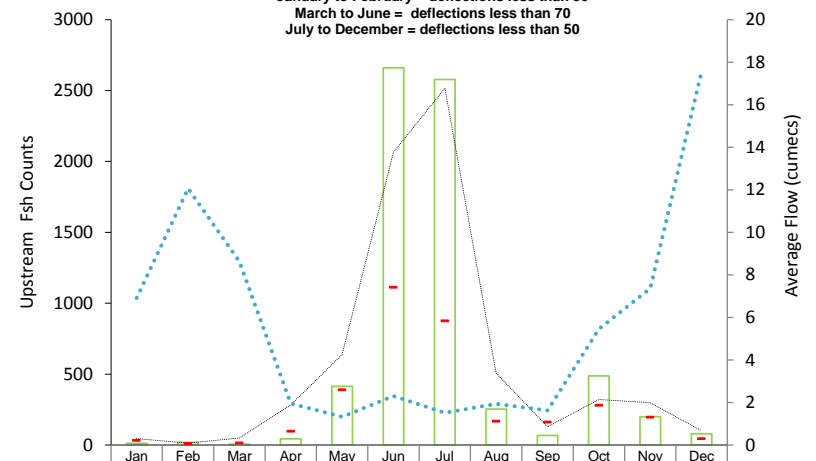
January to February = deflections greater than or equal to 50  
 March to June = deflections greater than or equal to 70  
 July to December = deflections greater than or equal to 50



	Jan	Feb	Mar	Apr	May	Jun	Jul	Aug	Sep	Oct	Nov	Dec
2020	1	3	4	18	237	173	133	100	22	109	65	24
2019	14	7	4	70	172	99	40	45	39	47	46	22
Long Term Average	56	21	29	185	324	201	157	97	69	160	160	93
Average Flow (cumecs)	7	12	9	2	1	2	2	2	2	5	7	18

### Upstream fish counts of 'small' fish recorded at Restormel fish counter 2020

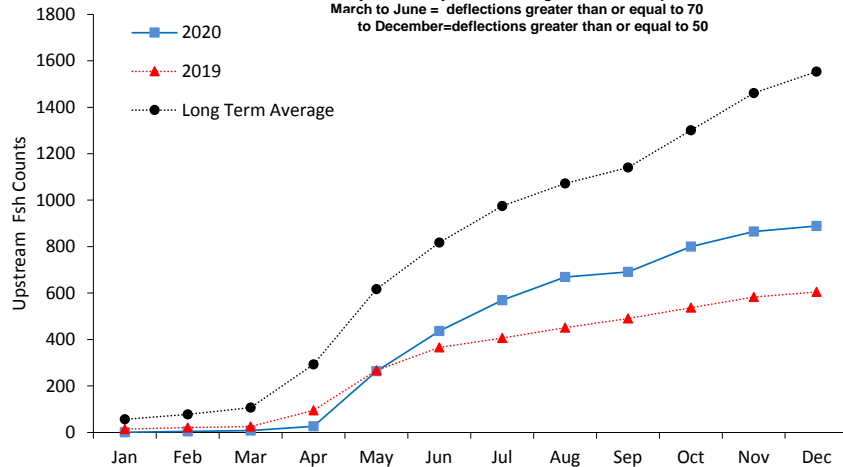
January to February = deflections less than 50  
 March to June = deflections less than 70  
 July to December = deflections less than 50



	Jan	Feb	Mar	Apr	May	Jun	Jul	Aug	Sep	Oct	Nov	Dec
2020	12	18	6	43	414	2660	2578	254	68	488	200	79
2019	35	12	17	99	391	1115	878	170	164	282	198	46
Long Term Average	46	13	50	283	638	2066	2517	507	129	321	299	101
Average Flow (cumecs)	7	12	9	2	1	2	2	2	2	5	7	18

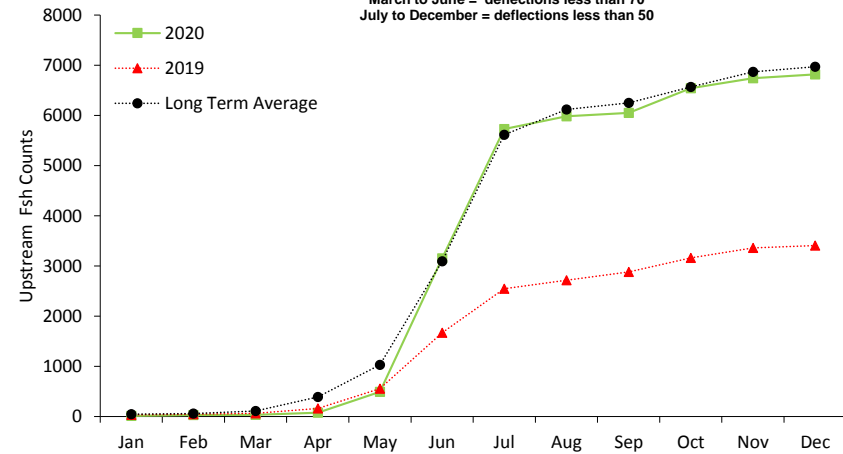
### Cumulative upstream counts of 'large' fish recorded at Restormel fish counter 2020

January to February = deflections greater than or equal to 50  
 March to June = deflections greater than or equal to 70  
 to December = deflections greater than or equal to 50



### Cumulative upstream counts of 'small' fish recorded at Restormel fish counter 2020

January to February = deflections less than 50  
 March to June = deflections less than 70  
 July to December = deflections less than 50



The fish counter figures provided in this summary are provisional and may be subject to change due to adjustments made for non-target species and fish counter detection and sizing efficiencies. The information provided is based on that currently available to the Environment Agency which accepts no liability for any loss, damage, costs or claims arising either directly or indirectly from its use or interpretation.