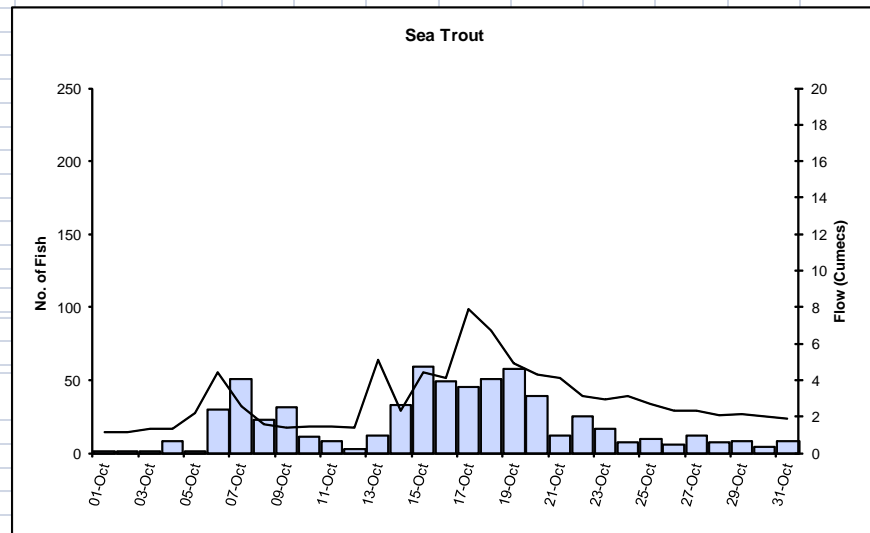
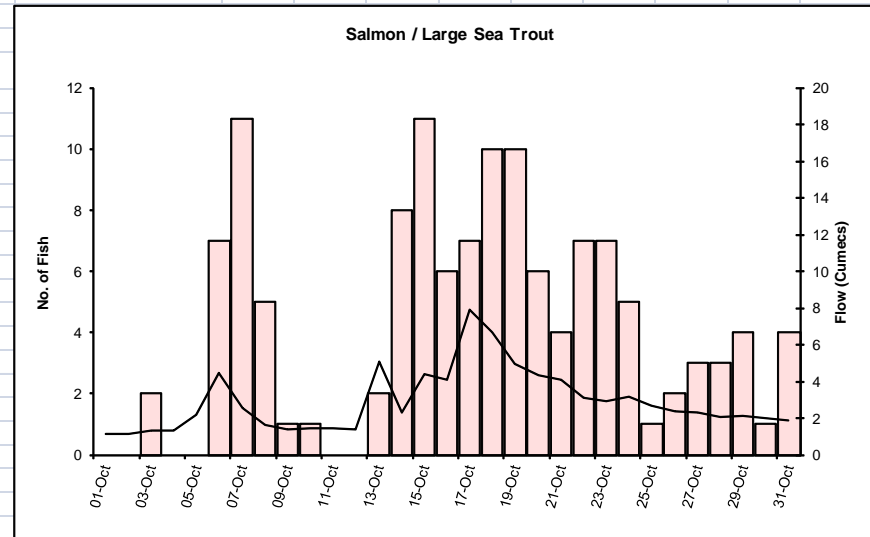


Restormel Fish Counter

October 2014

| Date | Upstream Salmon / Large Sea Trout Deflections > 50 | Upstream Sea Trout Deflections < 50 | Daily Mean Flow (cumecs) |
|--------|--|-------------------------------------|--------------------------|
| 01-Oct | 0 | 1 | 1.14 |
| 02-Oct | 0 | 1 | 1.14 |
| 03-Oct | 2 | 1 | 1.32 |
| 04-Oct | 0 | 8 | 1.34 |
| 05-Oct | 0 | 1 | 2.19 |
| 06-Oct | 7 | 30 | 4.45 |
| 07-Oct | 11 | 51 | 2.55 |
| 08-Oct | 5 | 23 | 1.61 |
| 09-Oct | 1 | 31 | 1.41 |
| 10-Oct | 1 | 11 | 1.43 |
| 11-Oct | 0 | 8 | 1.44 |
| 12-Oct | 0 | 3 | 1.40 |
| 13-Oct | 2 | 12 | 5.09 |
| 14-Oct | 8 | 33 | 2.30 |
| 15-Oct | 11 | 59 | 4.43 |
| 16-Oct | 6 | 49 | 4.11 |
| 17-Oct | 7 | 45 | 7.92 |
| 18-Oct | 10 | 51 | 6.69 |
| 19-Oct | 10 | 58 | 4.92 |
| 20-Oct | 6 | 39 | 4.32 |
| 21-Oct | 4 | 12 | 4.11 |
| 22-Oct | 7 | 25 | 3.13 |
| 23-Oct | 7 | 17 | 2.94 |
| 24-Oct | 5 | 7 | 3.16 |
| 25-Oct | 1 | 10 | 2.67 |
| 26-Oct | 2 | 6 | 2.35 |
| 27-Oct | 3 | 12 | 2.30 |
| 28-Oct | 3 | 7 | 2.08 |
| 29-Oct | 4 | 8 | 2.13 |
| 30-Oct | 1 | 4 | 2.01 |
| 31-Oct | 4 | 8 | 1.89 |

| | Counter | Counter |
|----------------------------------|-------------|-------------|
| Monthly Total 2014 | 128 | 631 |
| Monthly Total 2013 | 286 | 788 |
| Cumulative 2014 | 1528 | 9096 |
| Cumulative 2013 | 2040 | 9401 |
| 10 - Year Monthly Average | 223 | 375 |



The fish counter figures provided in this summary are provisional and may be subject to change due to adjustments made for fish counter detection and sizing efficiencies. Final adjusted figures will be released in the annual fish counter report. The information provided is based on that currently available to the Environment Agency. The Agency accepts no liability for any loss, damage, costs or claims arising either directly or indirectly from its use or interpretation.